

# Dose?



## Compounding Impact

*It's a new way of thinking about compounding—how clinicians use and deliver medications—and it can have a dramatic effect on the bottom line. We only sell medication we know can help a hospital run more efficiently.*



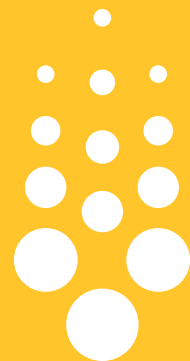
## Simplified Operation

*Hospitals are complicated enough. So we imagined what could be accomplished if your people spent less time on repetitive production and put that focus toward patient outcomes.*



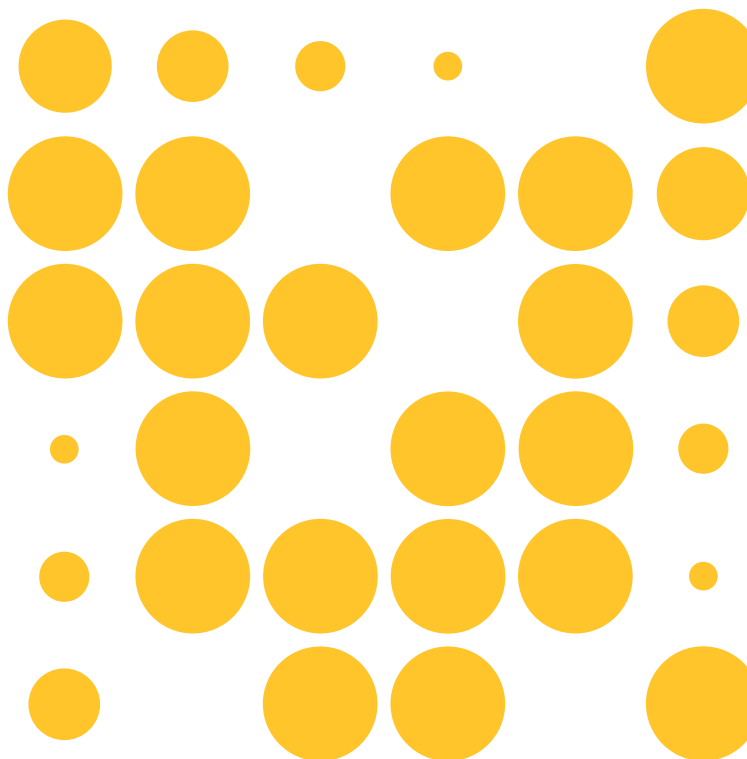
## Faster Fulfillment

*We compound our medications in anticipation of need, based on our knowledge of patient volumes. That focus means we can get our products to you faster—usually in a day—than most other 503B compounding pharmacies.*



# IntegraDose™

## Compounding Services



# Why Integra



## From Hospitals for Hospitals

*We are a health system pharmacy. Everything we make and sell has been proven in our own hospitals, in every kind of situation.*



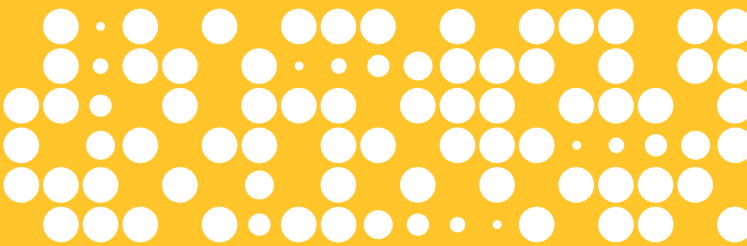
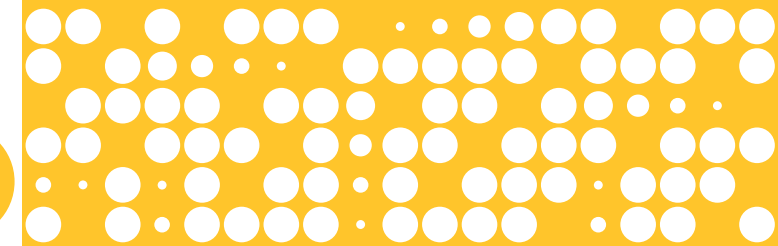
## Hospital Insights

*We're part of a hospital network, so we've seen the operational waste and inefficiencies that can be solved by streamlining how certain medications are made available.*



## State-of-the-Art Facility

*Our brand-new 503B compounding facility effectively meets or exceeds all regulations with five cleanrooms and both on-site and external lab testing to guarantee quality prior to release.*



**IntegraDose Compounding Services**  
**719 Kasota Ave Southeast, Minneapolis, MN 55414**

**[integradose.org](http://integradose.org)**

# We get hospitals, because we were created by one.

*IntegraDose was started to solve a simple, but complex hospital need—to get the most commonly compounded medicines to patients as quickly, accurately and efficiently as possible. We deliver compounded products more efficiently, so you can care for your patients more effectively.*

## About Us

IntegraDose started as a part of Fairview Pharmacy, a leader in hospital pharmacy innovation. As a health system pharmacy, we understand the in and outs of compounding medicines and understand the importance of getting the most commonly compounded medicines to patients as quickly, accurately and efficiently as possible.

## Commitment to Quality

We use these products in our own hospitals first, so it goes without saying we're committed to the highest standards of quality and safety. We maintain compliance with all regulatory requirements and expectations including 21 Code of Federal Regulations, Parts 210 & 211 and Interim Guidance for Human Drug Compounding Outsourcing Facilities Under Section 503B of the FD&C Act.

## State-of-the-Art 503B Compounding Facility

For starters, our 503B compounding facility is designed to ensure the rooms, air, hoods, and staff are actively sampled during production and all process steps are well defined, monitored and reviewed. And each product our facility produces is validated through long term testing, each batch is sampled for potency, sterility and endotoxin and all medicine batches are quarantined until successful sample results have been confirmed by external test labs.

# Products

## Antibiotics

### Cefazolin

#### 1 Gram/10 mL in Sterile Water

Syringe for Injection Concentration 100 mg/mL

UNIT SIZE	BUD	QUANTITY	NDC
30 ML SYRINGE, 10 ML FILL	45 DAYS REF	10 / PACK	71139-7093-1

#### 2 Gram/20 mL in Sterile Water

Syringe for Injection Concentration 100 mg/mL

UNIT SIZE	BUD	QUANTITY	NDC
30 ML SYRINGE, 20 ML FILL	45 DAYS REF	10 / PACK	71139-7087-1

#### 3 Gram in 0.9% Sodium Chloride

Bag for Injection Volume ~123 mL

UNIT SIZE	BUD	QUANTITY	NDC
100 ML BAG	60 DAYS REF	10 / PACK	71139-7153-1

## Narcotic Syringes

### Hydromorphone Hydrochloride

#### 0.2 mg/0.2 mL – No Overfill

Syringe for Injection Concentration 1mg/mL

UNIT SIZE	BUD	QUANTITY	NDC
1 ML SYRINGE, 0.2 ML FILL	120 DAYS RT	1 EACH	71139-7010-1

#### 0.5 mg/0.5 mL – No Overfill\*

Syringe for Injection Concentration 1mg/mL

UNIT SIZE	BUD	QUANTITY	NDC
1 ML SYRINGE, 0.5 ML FILL	120 DAYS RT	1 EACH	71139-7777-1

### Morphine Sulfate

#### 400 mcg/0.4 mL in 0.9% Sodium Chloride

Syringe for Injection Concentration 1000 mcg/mL

UNIT SIZE	BUD	QUANTITY	NDC
1 ML SYRINGE, 0.4 ML FILL	120 DAYS RT	1 EACH	71139-4746-2

## Electrolytes

### Magnesium Sulfate

#### 2 Gram in 0.9% Sodium Chloride\*

Bag for Injection Volume ~62 mL

UNIT SIZE	BUD	QUANTITY	NDC
50 ML BAG	180 DAYS RT	10 / PACK	71139-7085-1

### Potassium Chloride

#### 10 mEq + Lidocaine HCl 10 mg in 0.9% Sodium Chloride

Bag for Injection Volume ~114 mL

UNIT SIZE	BUD	QUANTITY	NDC
100 ML BAG	180 DAYS RT	10 / PACK	71139-6847-1

## PCA Syringes (Lifecare Glass Vial)

### Fentanyl Citrate

#### 1500 mcg/30 mL

PCA Syringe for Injection Concentration 50 mcg/mL

UNIT SIZE	BUD	QUANTITY	NDC
30 ML VIAL, 30 ML FILL	180 DAYS RT	1 EACH	71139-2325-1

### Hydromorphone Hydrochloride

#### 30 mg/30 mL

PCA Syringe for Injection Concentration 1mg/mL

UNIT SIZE	BUD	QUANTITY	NDC
30 ML VIAL, 30 ML FILL	180 DAYS RT	1 EACH	71139-5983-1

## Narcotic CADD Cassettes

### Fentanyl Citrate

#### 2500 mcg/50 mL

CADD for Injection Concentration 50 mcg/mL

UNIT SIZE	BUD	QUANTITY	NDC
50 ML RESERVOIR, 50 ML FILL	60 DAYS RT	1 EACH	71139-6030-1

\* Available only during national drug shortage

## Anesthesia Syringes

### Ephedrine Sulfate

#### 25 mg/5 mL in 0.9% Sodium Chloride

Syringe for Injection Concentration 5 mg/mL

UNIT SIZE	BUD	QUANTITY	NDC
10 ML SYRINGE, 5 ML FILL	180 DAYS RT	10 / PACK	71139-6643-1

### Neostigmine Methylsulfate

#### 5 mg/5 mL\*

Syringe for Injection Concentration 1 mg/mL

UNIT SIZE	BUD	QUANTITY	NDC
10 ML SYRINGE, 5 ML FILL	180 DAYS RT	10 / PACK	71139-7049-1

### Phenylephrine Hydrochloride

#### 1000 mcg/10 mL in 0.9% Sodium Chloride

Syringe for Injection Concentration 100 mcg/mL

UNIT SIZE	BUD	QUANTITY	NDC
10 ML SYRINGE, 10 ML FILL	180 DAYS RT	10 / PACK	71139-7084-1

### Succinylcholine Chloride

#### 100 mg/5 mL

Syringe for Injection Concentration 20 mg/mL

UNIT SIZE	BUD	QUANTITY	NDC
10 ML SYRINGE, 5 ML FILL	90 DAYS RT OR 180 DAYS REF	10 / PACK	71139-6564-1

## Oxytocin Infusion

### Oxytocin

#### 30 Units in 0.9% Sodium Chloride

Bag for Injection Volume ~545 mL

UNIT SIZE	BUD	QUANTITY	NDC
500 ML BAG	90 DAYS RT	1 EACH	71139-0012-1

## Sterile Cleaning Agents

### NovaClean

Ready to Use (RTU) Concentration, Sterile

BUD	QUANTITY
120 DAYS	1 EACH